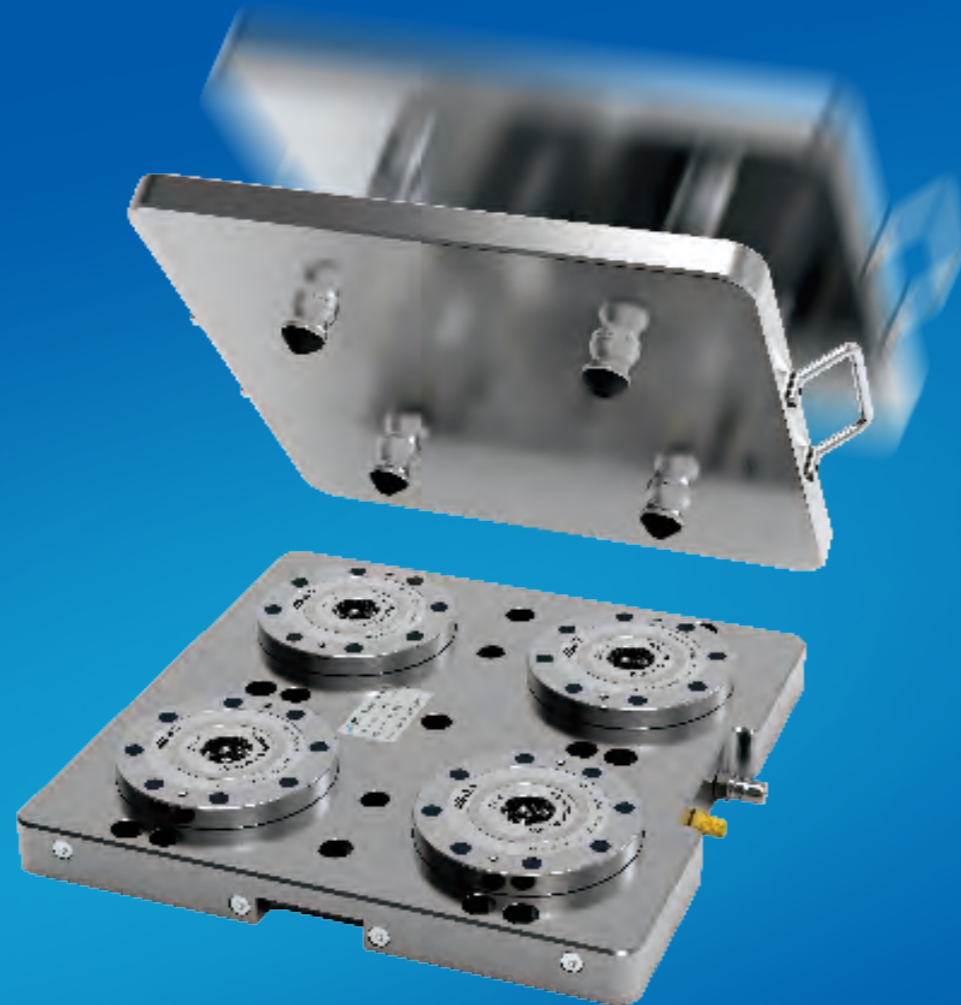


Zero point locator base board

A positioning system that integrates high precision and high clamping force



Straight column ball lock type zero locator base plate series

 <p>Q2GWB Two unit foundation board P45-46</p>	 <p>Q4GWB Four unit foundation board P47-48</p>	 <p>Q6GWB Six unit foundation board P49</p>
 <p>Q6XGWB Six unit foundation board P50</p>	 <p>Q8GWB Eight unit foundation board P51</p>	 <p>Q6LZ Special column for horizontal machining center P52</p>
 <p>Q9LZ Triangle pillar P53</p>	 <p>250/300/400MM Basic board P54</p>	 <p>550MM Basic board P55</p>
 <p>630/800MM Basic board P56</p>	 <p>800/1000MM Basic board P57</p>	 <p>1200MM Basic board P58</p>

Straight column ball lock locator tray series

 <p>2GWTP Two station tray P59</p>	 <p>4GWTP Four position pallet P59</p>	 <p>6GWTP Six station pallet P60</p>
--	--	--

Two unit zero point locator base board



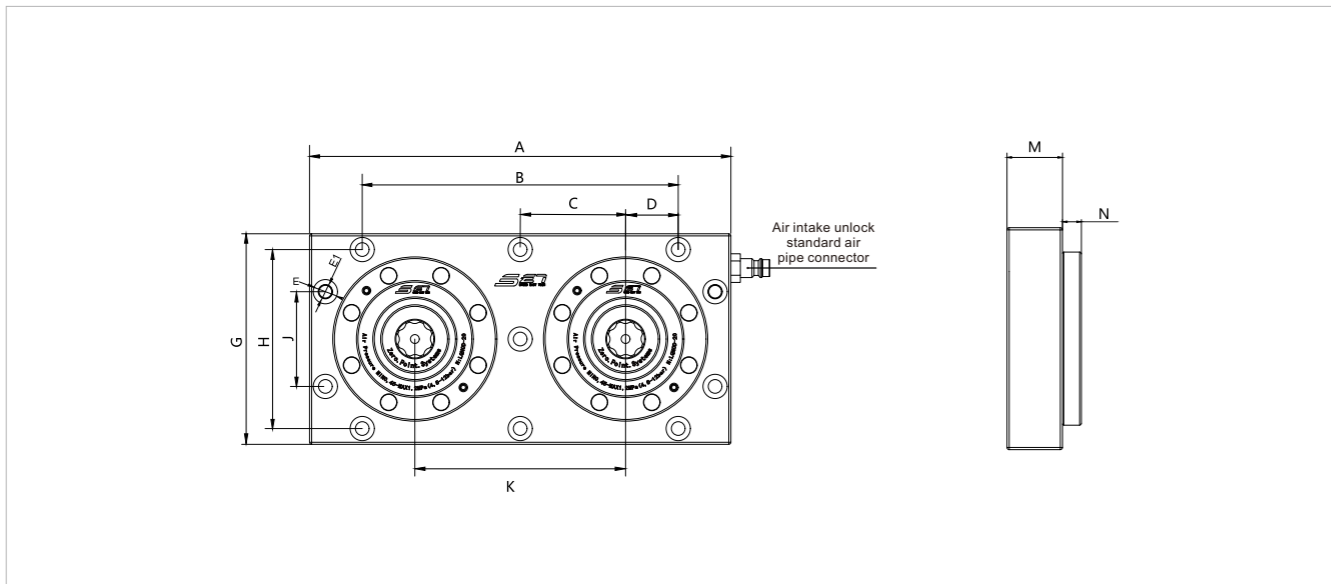
Product features:

- Air pressure unlocking, spring mechanical locking;
- Material: Stainless steel (or customer's choice);
- Surface and piston hardening treatment;
- Repetitive positioning accuracy<0.005mm;
- Locking onto the T-shaped slot through the countersunk hole on the substrate makes installation simple;
- There should be at least two positioning holes for accurate positioning.

Applicable industry:

- Suitable for metal or non-metal cutting fields.

Outline dimensions:



Main parameter table:

Order Number	Unlocking method	clamping force (kN)	Tension force (kN)	Weight (kg)
Q2GWB-5	Gas pressure	2×5	2×15	3.8

Order Number	A	G	C	D	ØE	ØE1	B	H	J	K (±0.01)	M	N
Q2GWB-5	200	100	50	25	6.5	11	150	85	45	100	25	8.5

Two unit zero point locator base board



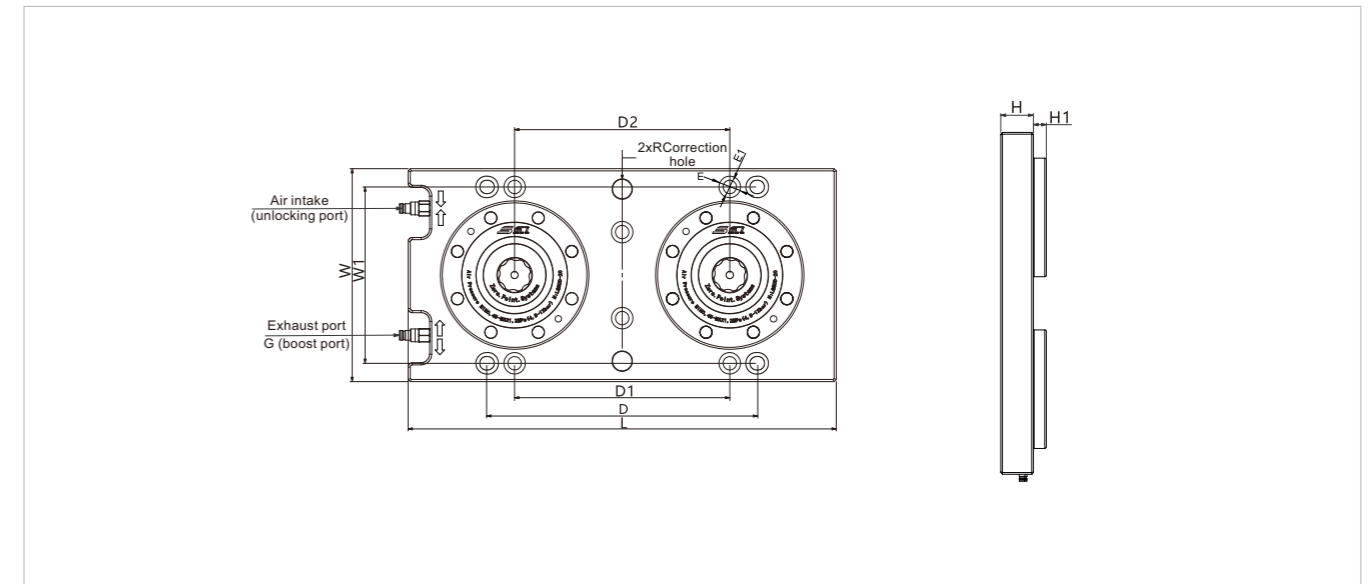
Product features:

- Pneumatic/hydraulic unlocking, Spring mechanical locking;
- Material: Stainless steel (or customer's choice);
- Surface and piston hardening treatment;
- Repetitive positioning accuracy<0.005mm;
- Locking onto the T-shaped slot through the countersunk hole on the substrate makes installation simple;
- Install a muffler at the exhaust port to prevent foreign objects from entering.

Applicable industry:

- Suitable for metal or non-metal cutting fields.

Outline dimensions:

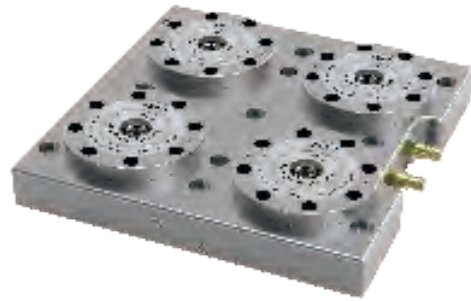


Main parameter table:

Order Number	Unlocking method	clamping force (kN)	Tension force (kN)	Weight (kg)
Q2GWB-10	Gas pressure	2×10	2×25	12.6
Q2GWB-20	Gas pressure	2×17	2×55	22.7

Order Number	L	W	D	D1	D2 (±0.01)	W1	H	H1	ØR	ØE	ØE1	G
Q2GWB-10	366	166	250-252	200	200	138	30	10	18	20	12.5	G1/8
Q2GWB-20	398	198	250-252	200	200	164	38	15	18	20	12.5	G1/4

Four unit zero point locator base board



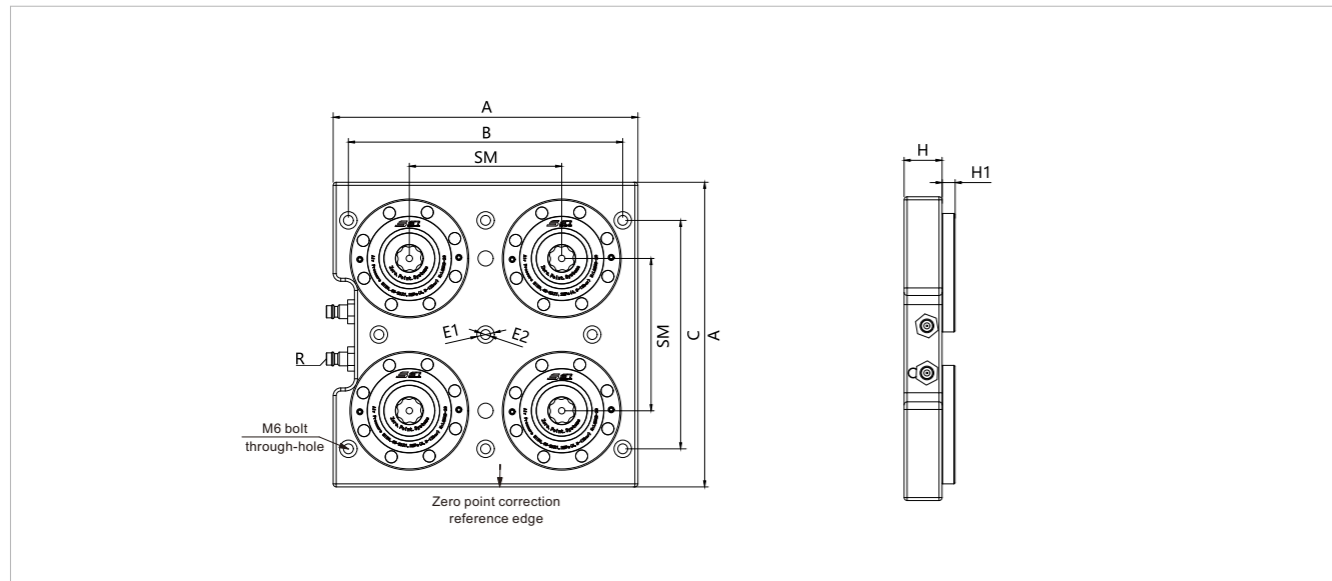
Product features:

- Air pressure unlocking, spring mechanical locking,
- Material: Stainless steel (or customer's choice);
- Surface and piston hardening treatment;
- Repetitive positioning accuracy<0.005mm;
- Locking onto the T-shaped slot through the countersunk hole on the substrate makes installation simple;
- There should be at least two positioning holes for accurate positioning.

Applicable industry:

- Suitable for metal or non-metal cutting fields.

Outline dimensions:



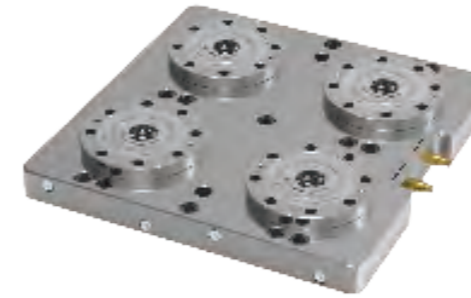
Main parameter table:

Order Number	Unlocking method	clamping force (kN)	Tension force (kN)	Blowing debris	Weight (kg)
Q4GWB-5	Gas pressure	4×5	4×15	√	7.9

√ Capable of blowing air

Order Number	A	B	C	SM	ØE1	ØE2	H	H1	R
Q4GWB-5	200	180	150	100	11.5	6.5	25	8.5	G1/8

Four unit zero point locator base board



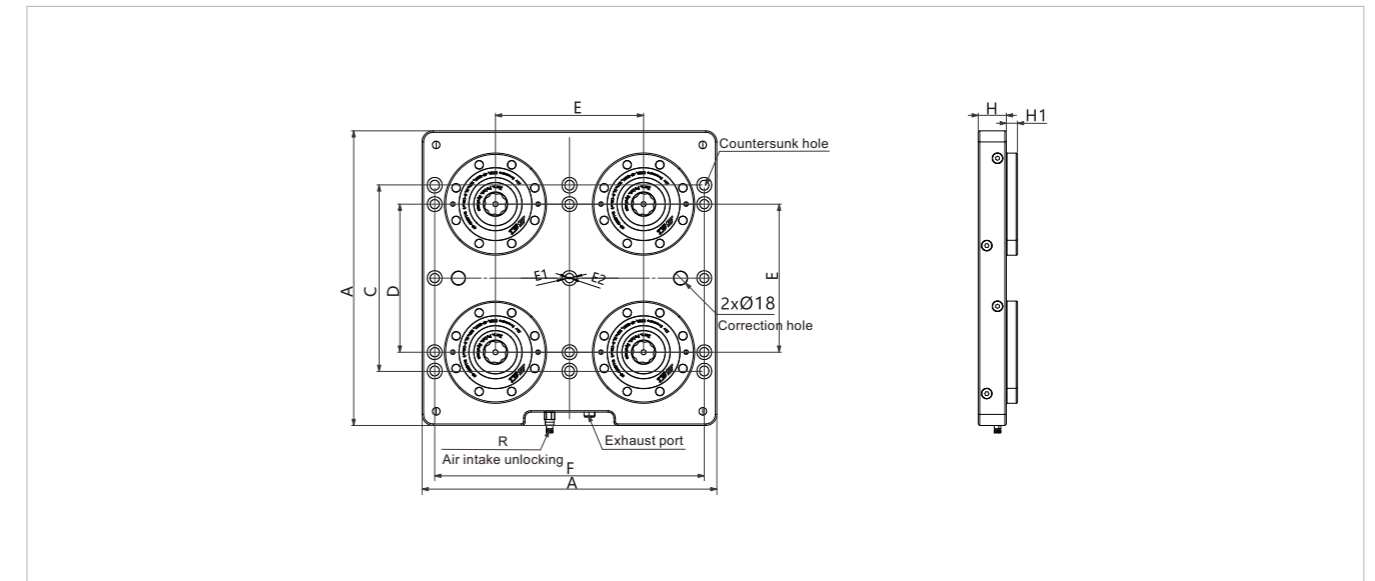
Product features:

- Air pressure unlocking, spring mechanical locking,
- Material: Stainless steel (or customer's choice);
- Surface and piston hardening treatment;
- Repetitive positioning accuracy<0.005mm;
- Locking onto the T-shaped slot through the countersunk hole on the substrate makes installation simple;
- There should be at least two positioning holes for accurate positioning.

Applicable industry:

- Suitable for metal or non-metal cutting fields.

Outline dimensions:



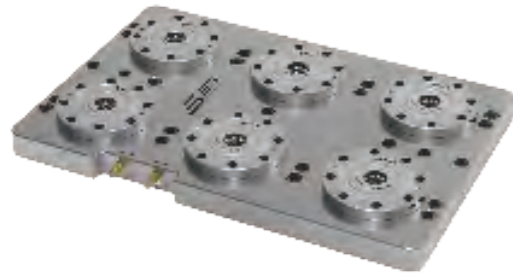
Main parameter table:

Order Number	Unlocking method	clamping force (kN)	Tension force (kN)	Blowing debris	Weight (kg)
Q4GWB-10	Gas pressure	4×10	4×25	√	28.7
Q4GWB-20	Gas pressure	4×17	4×55	√	46

√ Capable of blowing air

Order Number	A	C	D	E (±0.01)	F	ØE1	ØE2	H	H1	R
Q4GWB-10	366	250-252	200	200	336	20	12.5	32	10	G1/8
Q4GWB-20	398	250-252	200	200	364	20	12.5	38	15	G1/4

Six unit zero point positioning device base board



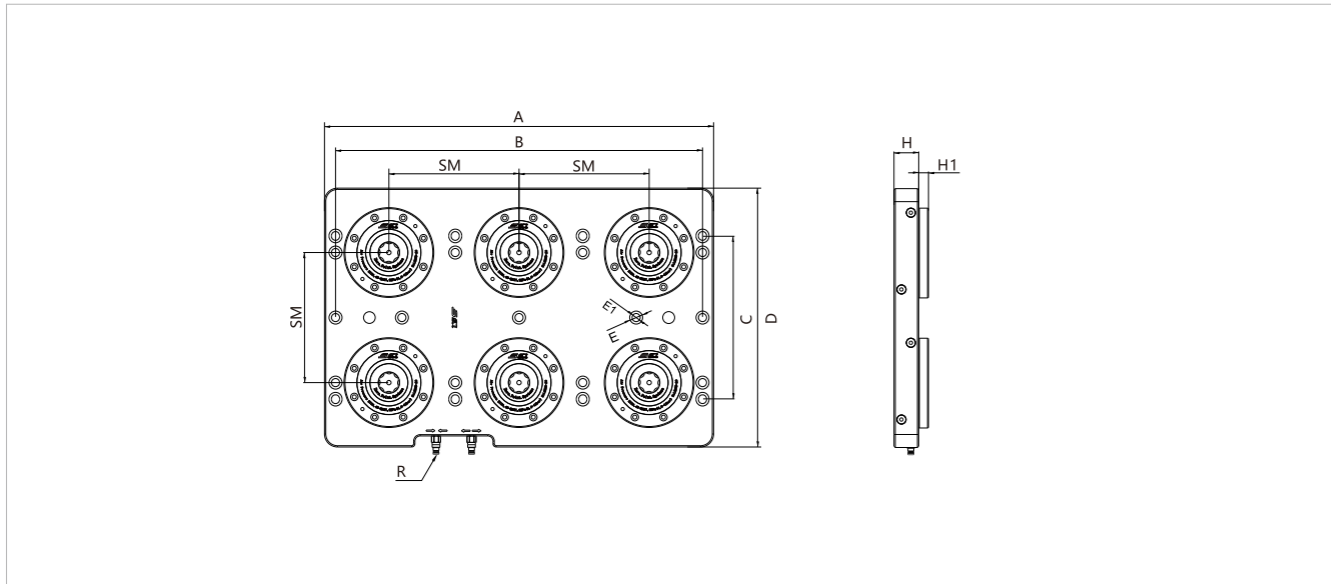
Product features:

- Air pressure unlocking, spring mechanical locking,
- Material: Stainless steel (or customer's choice);
- Surface and piston hardening treatment;
- Repetitive positioning accuracy<0.005mm;
- Locking onto the T-shaped slot through the countersunk hole on the substrate makes installation simple;
- There should be at least two positioning holes for accurate positioning.

Applicable industry:

- Suitable for metal or non-metal cutting fields.

Outline dimensions:



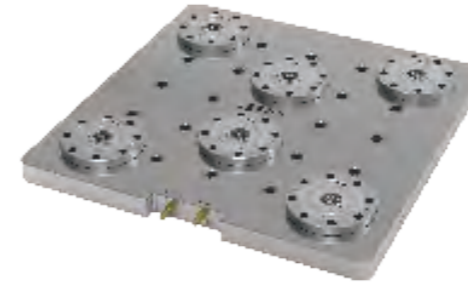
Main parameter table:

Order Number	Unlocking method	clamping force (kN)	Tension force (kN)	Blowing debris	Weight (kg)
Q6GWB-10	Gas pressure	6x10	6x25	√	40.5
Q6GWB-20	Gas pressure	6x17	6x55	√	70

√ Capable of blowing air

Order Number	A	B	C	D	SM	ØE	ØE1	H	H1	R
Q6GWB-10	570	536	250-252	370	200	20	12.5	32	10	G1/8
Q6GWB-20	598	564	250-252	398	200	20	12.5	38	15	G1/4

Six unit zero point positioning device base board



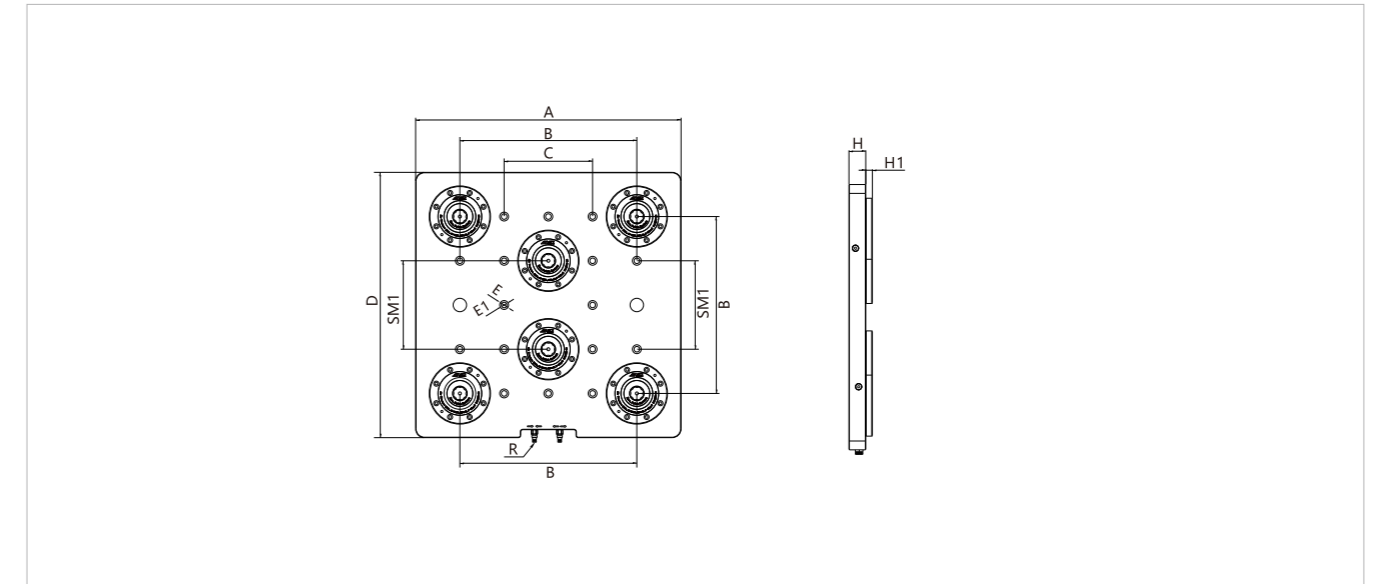
Product features:

- Air pressure unlocking, spring mechanical locking,
- Material: Stainless steel (or customer's choice);
- Surface and piston hardening treatment;
- Repetitive positioning accuracy<0.005mm;
- Locking onto the T-shaped slot through the countersunk hole on the substrate makes installation simple;
- There should be at least two positioning holes for accurate positioning.

Applicable industry:

- Suitable for metal or non-metal cutting fields;
- Suitable for horizontal CNC machining.

Outline dimensions:



Main parameter table:

Order Number	Unlocking method	clamping force (kN)	Tension force (kN)	Blowing debris	Weight (kg)
Q6XGWB-10	Gas pressure	6x10	6x25	√	18
Q6XGWB-20	Gas pressure	6x17	6x55	√	32

√ Capable of blowing air

Order Number	A	B	C	D	SM1	ØE	ØE1	H	H1	R
Q6XGWB-10	498	350	175	498	200	20	12.5	32	10	G1/8
Q6XGWB-20	598	400	200	598	200	20	12.5	38	15	G1/4

Eight unit zero point is the base board of the positioner



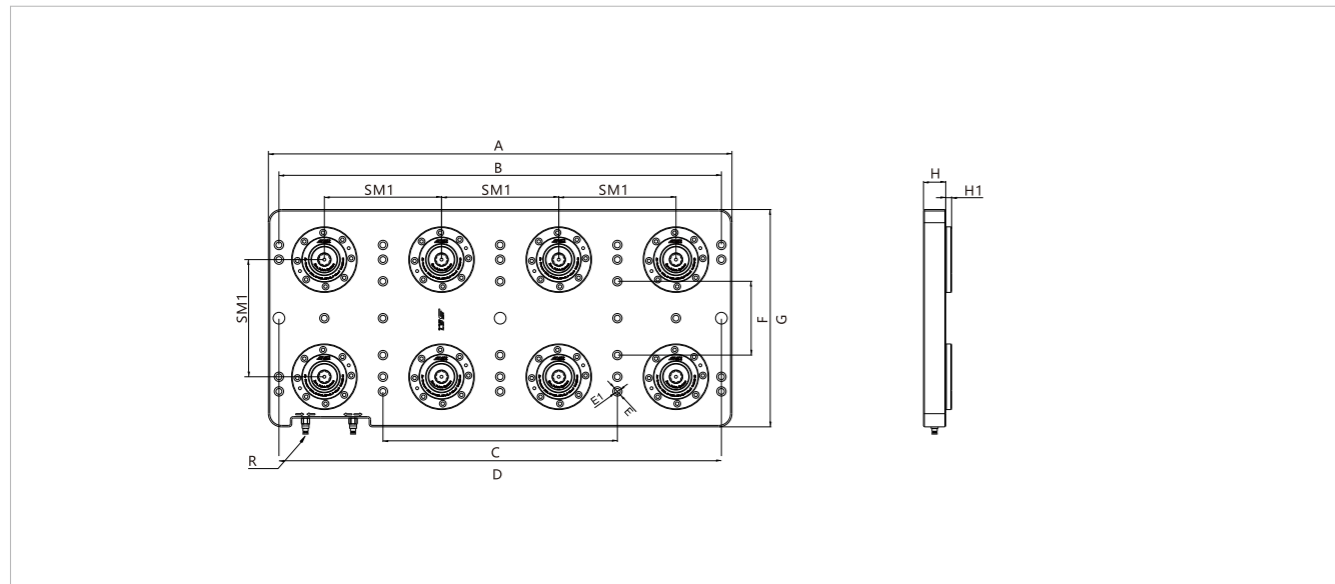
Product features:

- Air pressure unlocking, spring mechanical locking;
- Material: Stainless steel (or customer's choice);
- Surface and piston hardening treatment;
- Repetitive positioning accuracy<0.005mm;
- Locking onto the T-shaped slot through the countersunk hole on the substrate makes installation simple;
- There should be at least two positioning holes for accurate positioning.

Applicable industry:

- Suitable for metal or non-metal cutting fields.

Outline dimensions:



Main parameter table:

Order Number	Unlocking method	clamping force (kN)	Tension force (kN)	Blowing debris	Weight (kg)
Q8XGWB-20	Gas pressure	8x17	8x55	√	121.5

√ Capable of blowing air

Order Number	A	B	C	D	SM1	Ø E	Ø E1	F	G	H	H1	R
Q8XGWB-20	798	764	382	764	200	20	12.5	200	398	38	15	G1/4



Special column for horizontal machining center

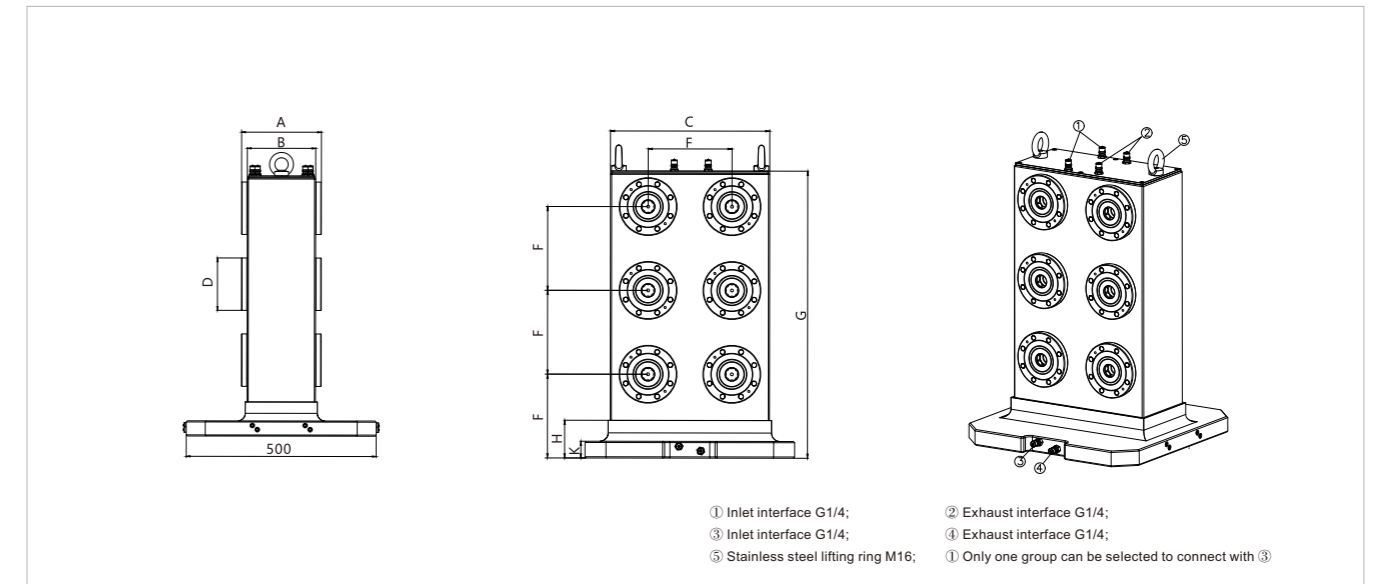
Product features:

- Pneumatic/hydraulic unlocking, mechanical locking;
- Material: Ht300;
- Surface and piston hardening treatment;
- Repetitive positioning accuracy<0.005mm.

Applicable industry:

- Suitable for metal or non-metal cutting fields;
- Suitable for horizontal CNC machining.

Outline dimensions:



- ① Inlet interface G1/4;
- ② Exhaust interface G1/4;
- ③ Inlet interface G1/4;
- ④ Exhaust interface G1/4;
- ⑤ Stainless steel lifting ring M16;
- ⑥ Only one group can be selected to connect with ③

Main parameter table:

Order Number	Unlocking method	clamping force (kN)	Tension force (kN)	Blowing debris	Weight (kg)
Q6LZ-10	Gas pressure	(2x)6x10	(2x)6x25	√	228
Q6LZ-20	Gas pressure	(2x)6x17	(2x)6x55	√	272

√ Capable of blowing air

Order Number	A	B	C	Ø D	F	G	H	K
Q6LZ-10	168	144	304	110	160	548	72	32
Q6LZ-20	210	180	380	138	200	685	90	40



Triangle pillar

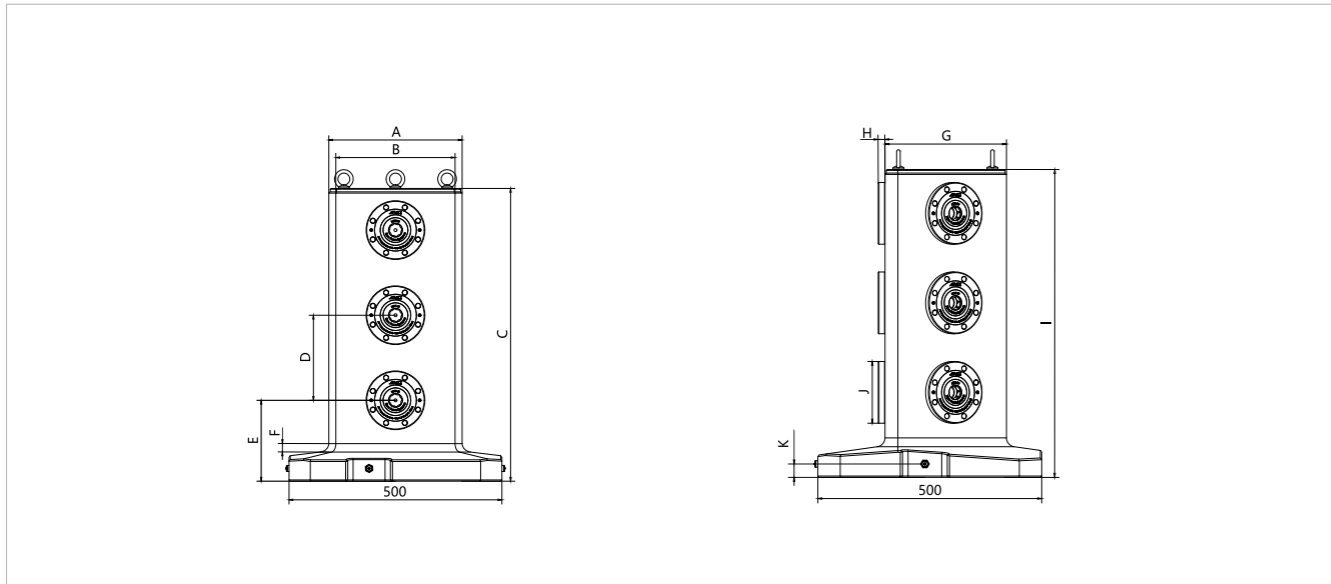
Product features:

- Pneumatic/hydraulic unlocking, mechanical locking;
- Material: Ht300;
- Surface and piston hardening treatment;
- Repetitive positioning accuracy<0.005mm.

Applicable industry:

- Suitable for metal or non-metal cutting fields;
- Suitable for horizontal CNC machining.

Outline dimensions:



Main parameter table:

Order Number	Unlocking method	clamping force (kN)	Tension force (kN)	Blowing debris	Weight (kg)
Q9LZ-10	Gas pressure	(3x)3x10	(3x)3x25	√	260
Q9LZ-20	Gas pressure	(3x)3x17	(3x)3x55	√	303

√ Capable of blowing air

Order Number	A	B	C	D	E	F	G	H	I	J	K
Q9LZ-10	250	224	550	160	152	15	216	12	550	110	24
Q9LZ-20	313	280	688	200	190	19	271	15	688	138	30



250/300/400mm foundation board

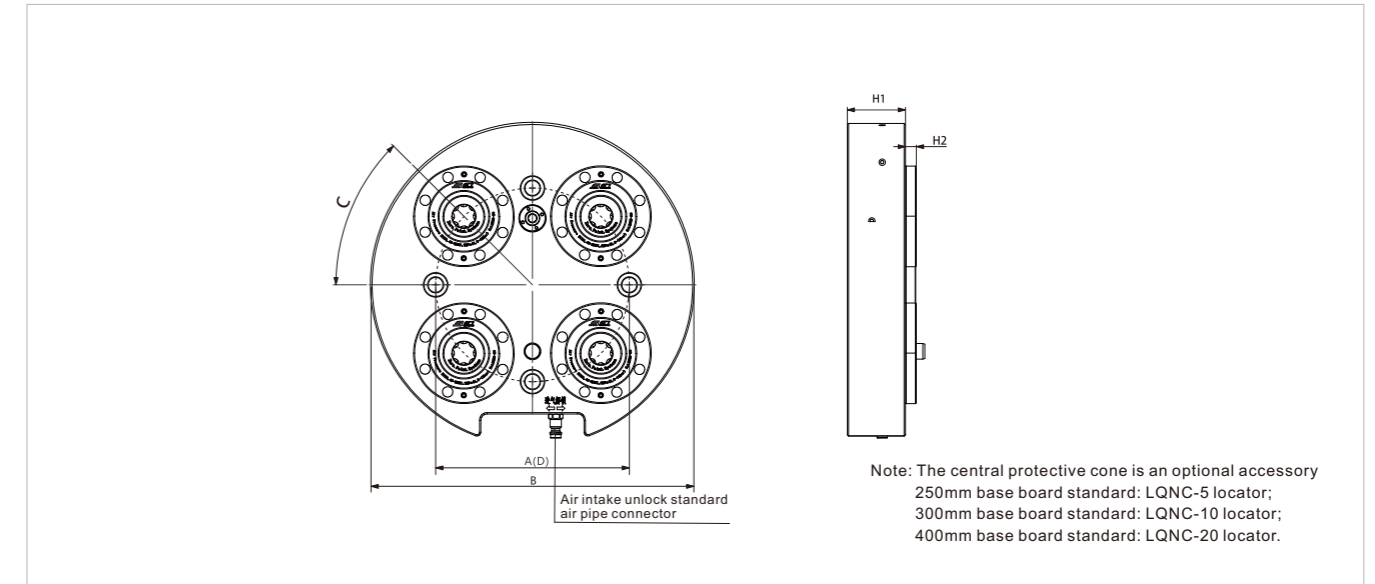
Product features:

- Pneumatic unlocking, mechanical locking;
- Material: stainless steel;
- Repetitive positioning accuracy<0.005mm;
- Special requirements can be customized by contacting us.

Applicable industry:

- Suitable for metal or non-metal cutting fields;
- Suitable for four axis and machine tool machining.

Outline dimensions:



Main parameter table:

Order Number	Unlocking method	clamping force (kN)	Tension force (kN)	Blowing debris	Weight (kg)
Q4GWYB-250	Gas pressure	4x5	4x13	√	16.5
Q4GWYB-300	Gas pressure	4x10	4x25	√	25
Q4GWYB-400	Gas pressure	4x17	4x55	√	39.5

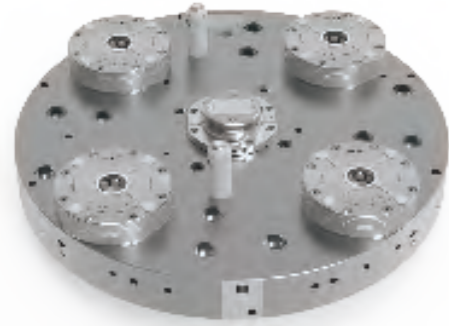
Note: 250/300mm does not have positioning and relaxation detection function, while 400mm has positioning and relaxation detection function

√ Capable of blowing air

Order Number	∅A (±0.01)	∅B	C	∅D	H1	H2
Q4GWYB-250	150	250	45°	150	45	8.5
Q4GWYB-300	190	300	45°	150	50	10
Q4GWYB-400	250	400	45°	150	45	35

Note: Customized designs can be made for different working conditions

550MM base board



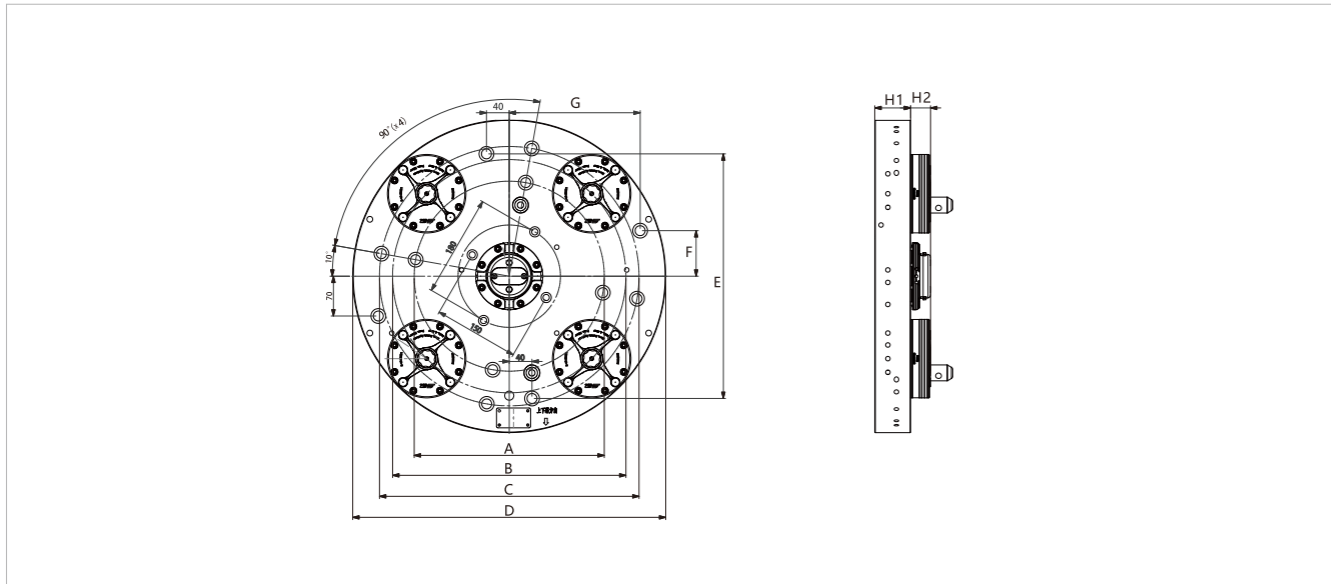
Product features:

- Air pressure unlocking, mechanical locking;
- Material: Stainless Steel;
- Repetitive positioning accuracy<0.003mm;
- Special requirements can be customized by contacting us.

Applicable industry:

- Suitable for metal or non-metal cutting fields;
- Suitable for five axis, sleeper, and machine tool machining.

Outline dimensions:



Main parameter table:

Order Number	Unlocking method	clamping force (kN)	Tension force (kN)	Blowing debris	Weight (kg)
Q4GWYB-550	Gas pressure	4x17	4x55	√	115

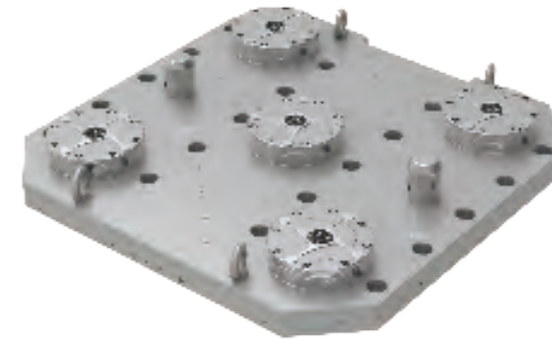
Note: Equipped with positioning detection and relaxation detection functions

√ Capable of blowing air

Order Number	∅A	∅B (±0.01)	∅C	∅D	E	F	G	H1	H2
Q4GWYB-550	334	410	456	550	430	80	230	63	35

Note: Customized designs can be made for different working conditions

630/800MM foundation board



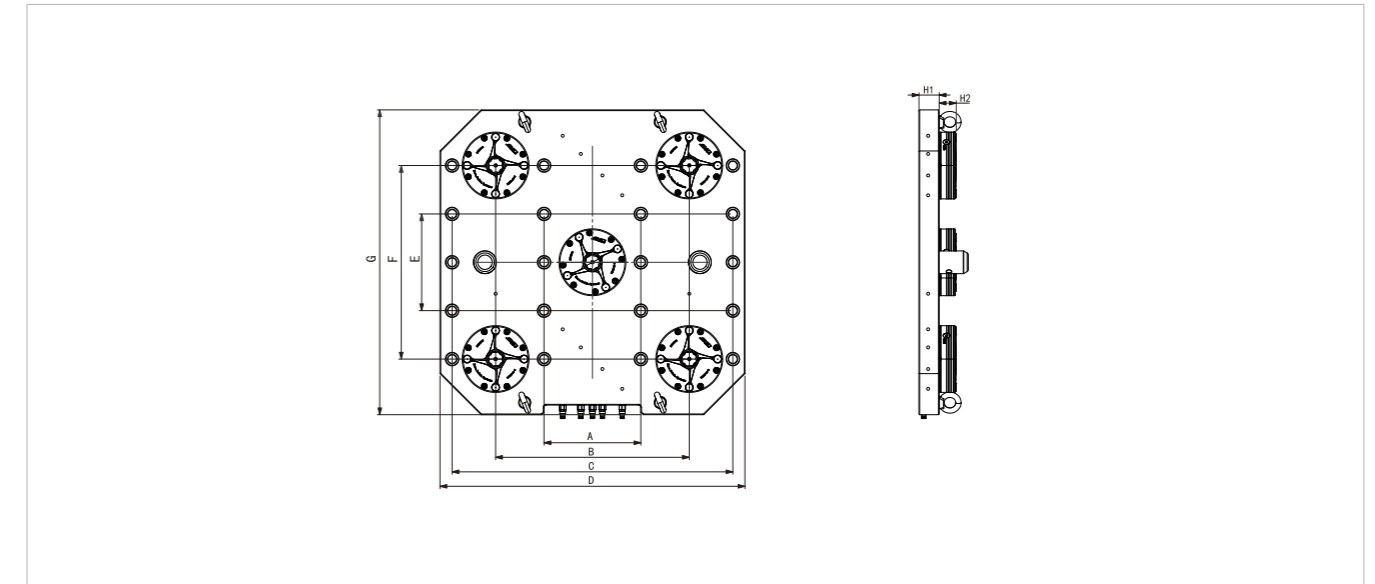
Product features:

- Pneumatic unlocking, mechanical locking;
- Material: Stainless steel;
- Repetitive positioning accuracy<0.01mm;
- Special requirements can be customized by contacting us.

Applicable industry:

- Suitable for metal or non-metal cutting fields;
- Suitable for five axis, sleeper, and machine tool machining.

Outline dimensions:



Main parameter table:

Order Number	Unlocking method	clamping force (kN)	Tension force (kN)	Blowing debris	Weight (kg)
Q5GWB-630	Gas pressure	5x17	5x55	√	160.5
Q5GWB-800	Gas pressure	5x17	5x55	√	306

Note: Equipped with positioning detection and relaxation detection functions

√ Capable of blowing air

Order Number	∅A	∅B (±0.01)	∅C	∅D	E	F (±0.01)	G	H1	H2
Q5GWB-630	200	400	580	630	200	400	630	52	35
Q5GWB-800	200	500	680	800	200	400	800	62	35

Note: Customized designs can be made for different working conditions

800/1000MM base board



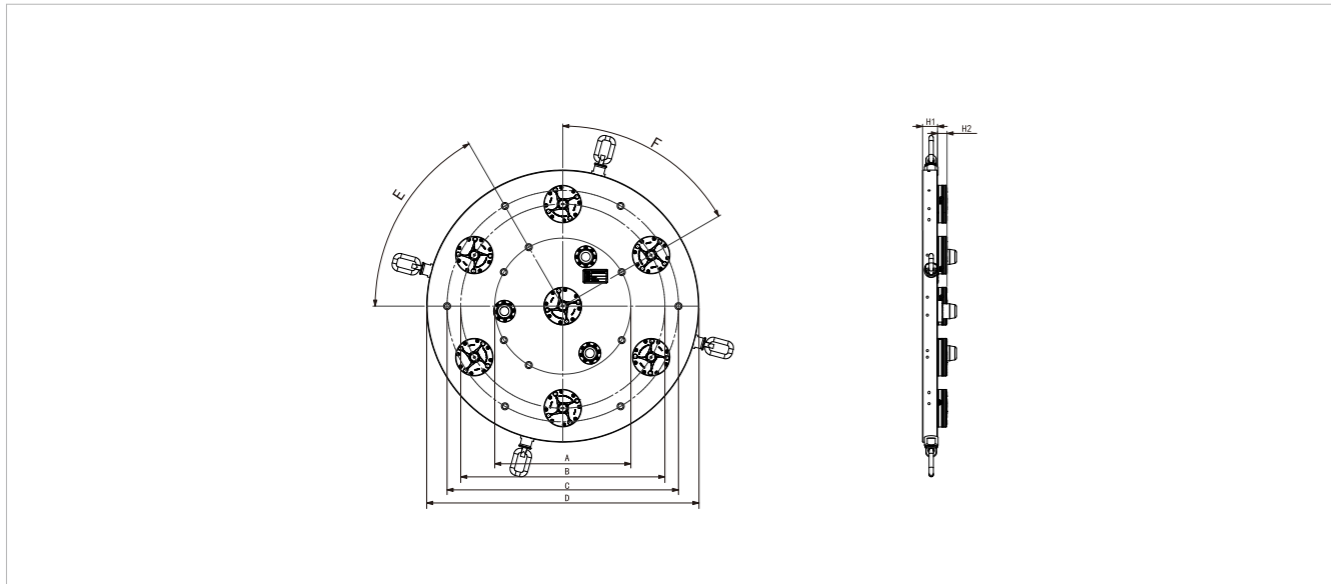
Product features:

- Air pressure unlocking, mechanical locking;
- Material: Stainless Steel;
- Repetitive positioning accuracy<0.01mm;
- Special requirements can be customized by contacting us.

Applicable industry:

- Suitable for metal or non-metal cutting fields;
- Suitable for five axis, sleeper, and machine tool machining.

Outline dimensions:



Main parameter table:

Order Number	Unlocking method	clamping force (kN)	Tension force (kN)	Blowing debris	Weight (kg)
Q7GWYB-800	Gas pressure	7x17	7x55	√	261
Q9GWYB-1000	Gas pressure	9x17	9x55	√	514

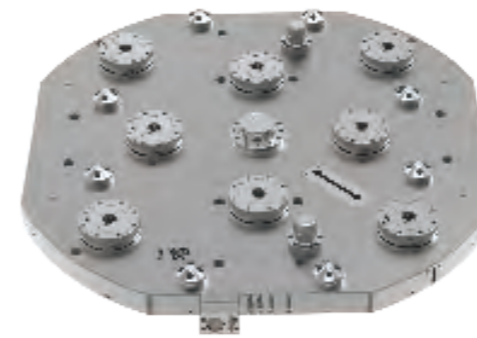
Note: Equipped with positioning detection and relaxation detection functions

√ Capable of blowing air

Order Number	∅A	∅B (±0.02)	∅C	∅D	E	F	H1	H2
Q7GWYB-800	400	600	700	800	60°(X6)	60°(X6)	65	35
Q9GWYB-1000	500	750	850	1000	60°(X6)	60°(X6)	75	35

Note: Customized designs can be made for different working conditions

1200MM foundation board



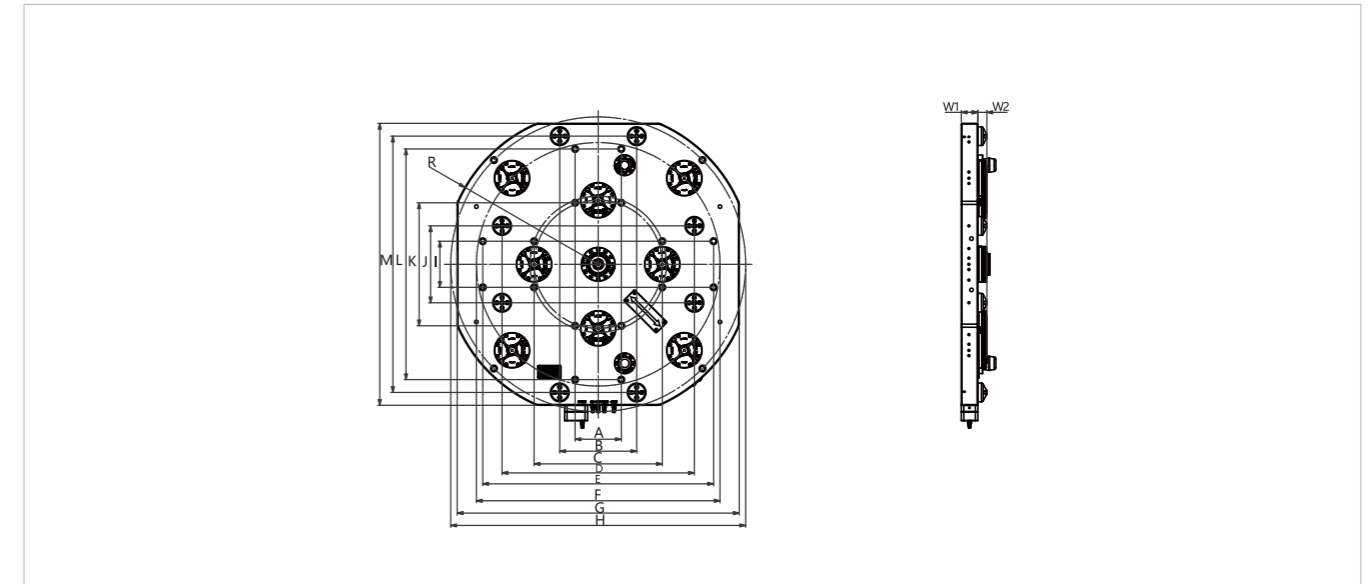
Product features:

- Pneumatic unlocking, mechanical locking;
- Material: Stainless steel;
- Repetitive positioning accuracy<0.015mm;
- Special requirements can be customized by contacting us.

Applicable industry:

- Suitable for metal or non-metal cutting fields;
- Suitable for five axis, sleeper, and machine tool machining.

Outline dimensions:



Main parameter table:

Order Number	Unlocking method	clamping force (kN)	Tension force (kN)	Blowing debris	Weight (kg)
Q8GWB-20K-1200	气压	8x17	8x55	√	563

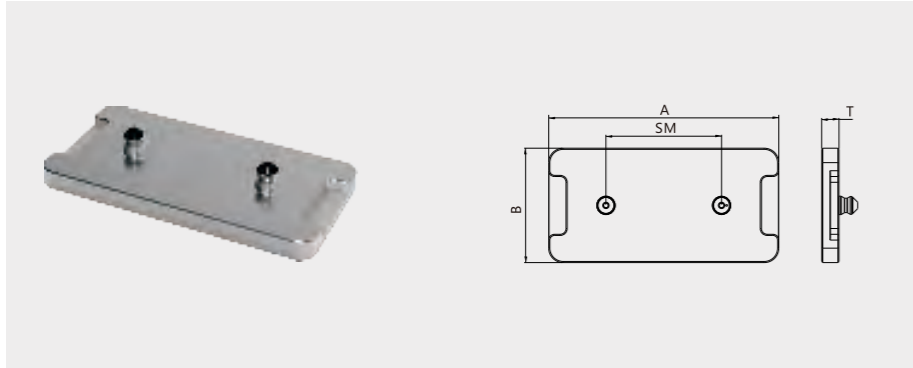
Note: Equipped with positioning detection and relaxation detection functions

√ Capable of blowing air

Order Number	A	B	C	∅D	E	F	G	H	I
Q8GWB-20K-1200	180	300	500	750	900	950	1100	1150	180

J	K	L	M	R	W1	W2
1200	900	1000	1100	600	65	35

Note: Customized designs can be made for different working conditions



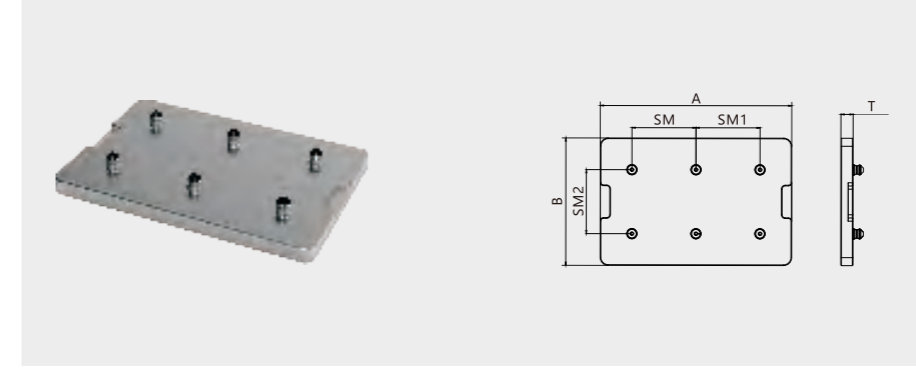
Two unit tray

Product features:

- Material: Stainless steel (or customer's choice);
- Suitable for two unit zero point positioning base board;
- Support non-standard customization.

Main parameter table:

Order Number	A	B	SM	T
2GWTP-5	200	100	100	20
2GWTP-10	366	166	200	28
2GWTP-20	398	198	200	28



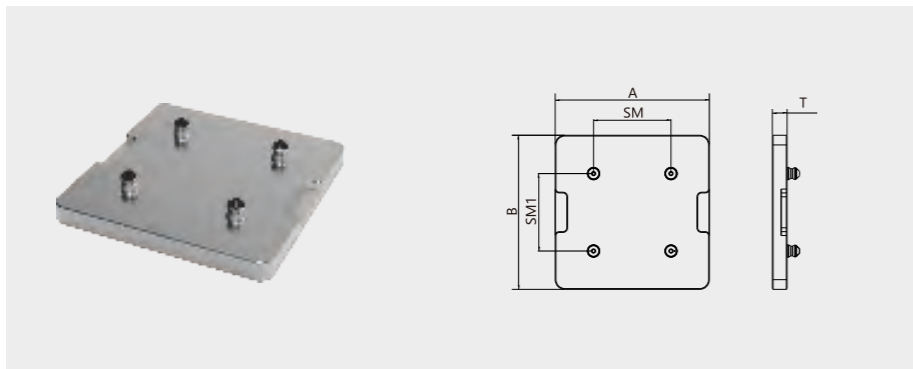
Six unit tray

Product features:

- Material: Stainless steel (or customer's choice);
- Suitable for six unit zero point positioning base board;
- Support non-standard customization.

Main parameter table:

Order Number	A	B	SM	SM1	SM2	T
6GWTP-5	300	200	100	100	100	28
6GWTP-10	566	366	200	200	200	30
6GWTP-20	598	398	200	200	200	38



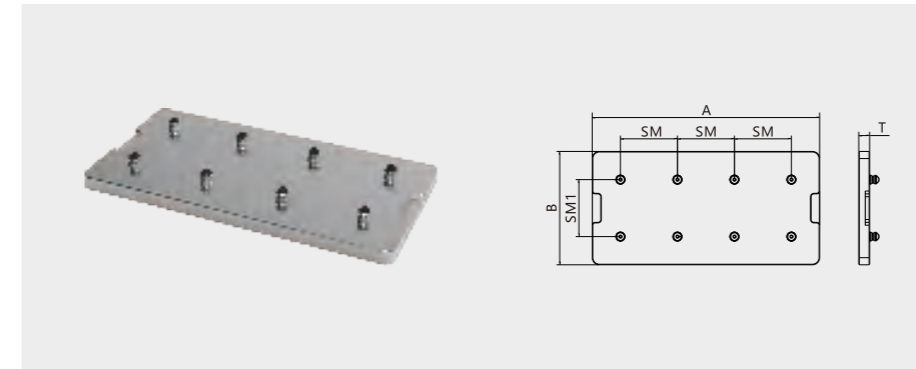
Four unit tray

Product features:

- Material: Stainless steel (or customer's choice);
- Suitable for four unit zero point positioning base board;
- Support non-standard customization.

Main parameter table:

Order Number	A	B	SM	SM1	T
4GWTP-5	200	200	100	100	20
4GWTP-10	366	366	200	200	28
4GWTP-20	398	398	200	200	28
4GWTP-40	426	426	200	200	38



Eight unit tray

Product features:

- Material: Stainless steel (or customer's choice);
- Suitable for eight unit zero point positioning base board;
- Support non-standard customization.

Main parameter table:

Order Number	A	B	SM	SM1	T
8GWTP-5	400	200	100	100	28
8GWTP-10	766	366	200	200	30
8GWTP-20	798	398	200	200	38
8GWTP-40	826	426	200	200	45